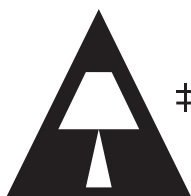
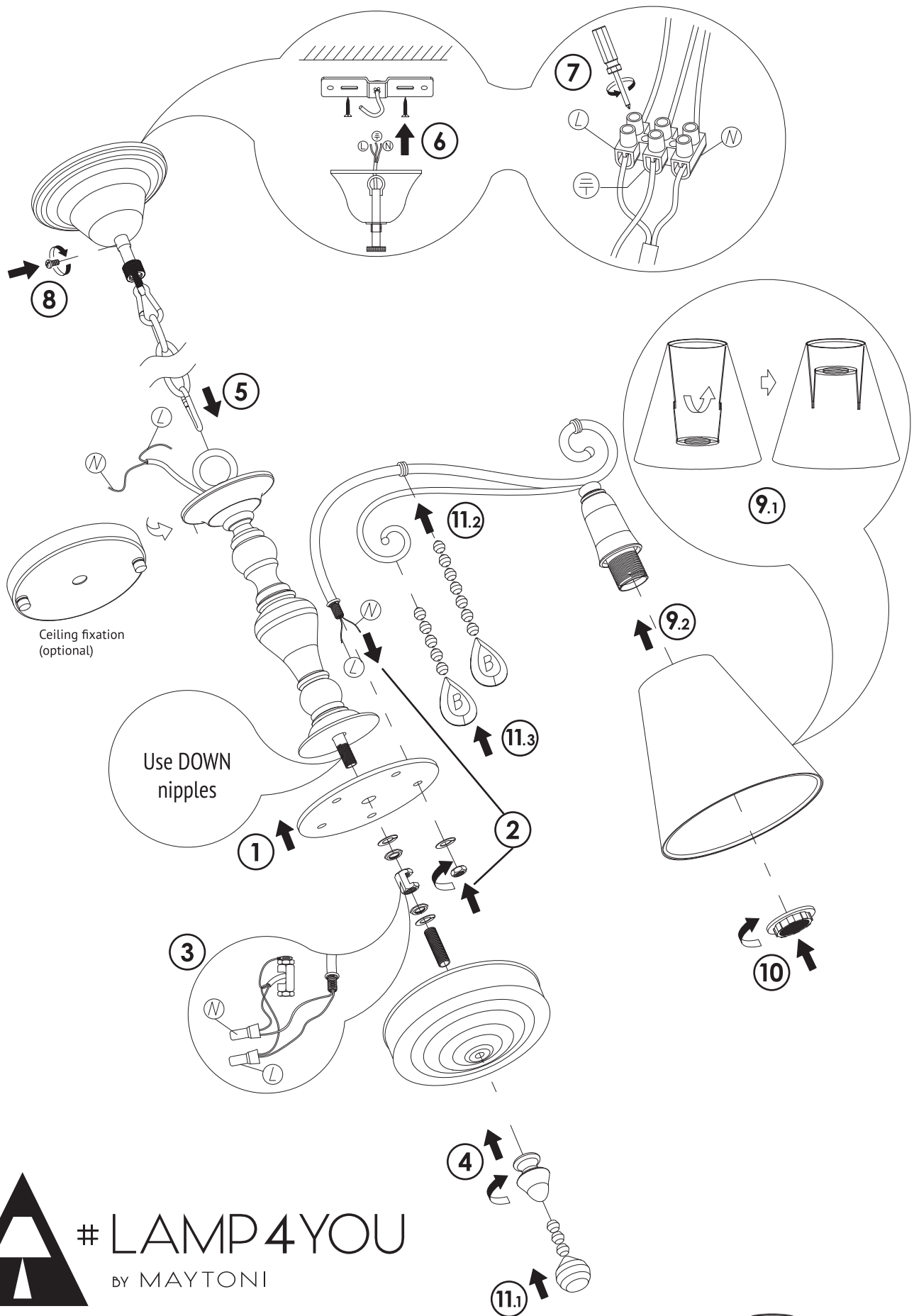
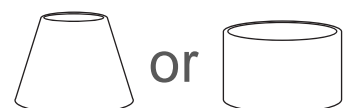


# Assembly option 2 (arms down)

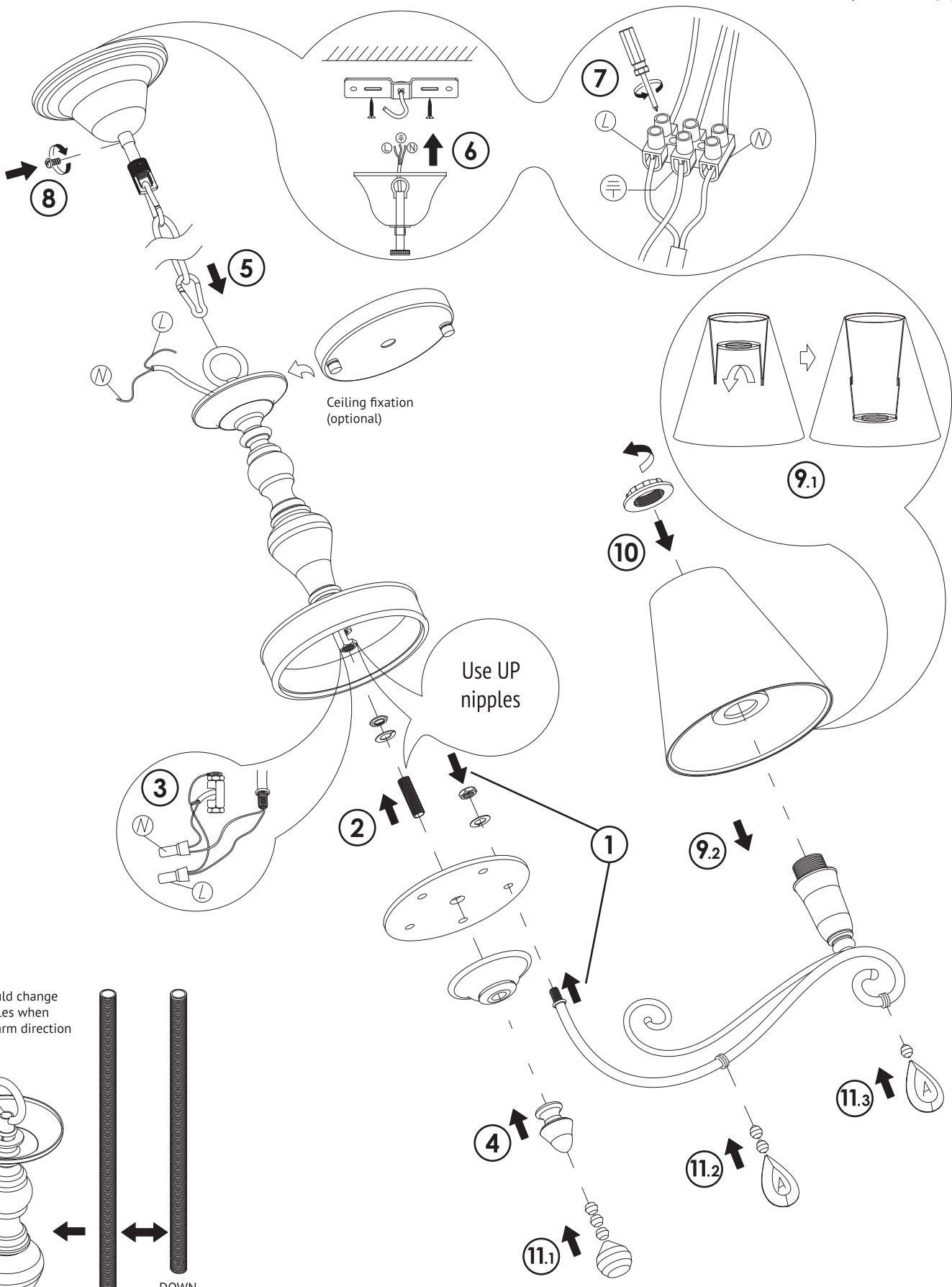


#LAMP4YOU  
BY MAYTONI

**ATTENTION!**  
Installation and changing arm direction should be carried out by electrician.  
Power should be cut off before cleanliness or bulbs changing



# Assembly option 1 (arms up)



Ceiling fixation  
(optional)

Use UP  
nipples

You should change  
the nipples when  
change arm direction

