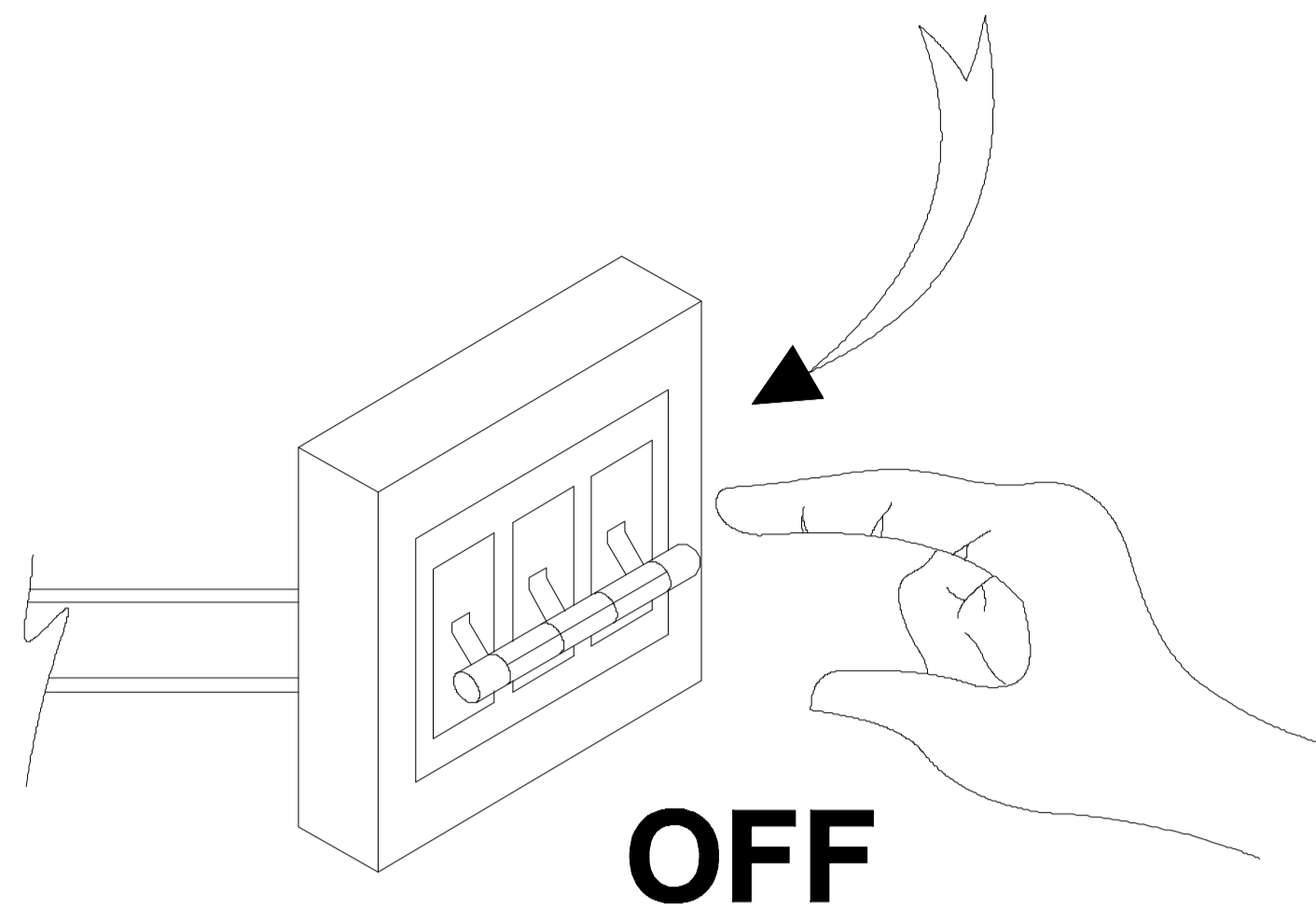


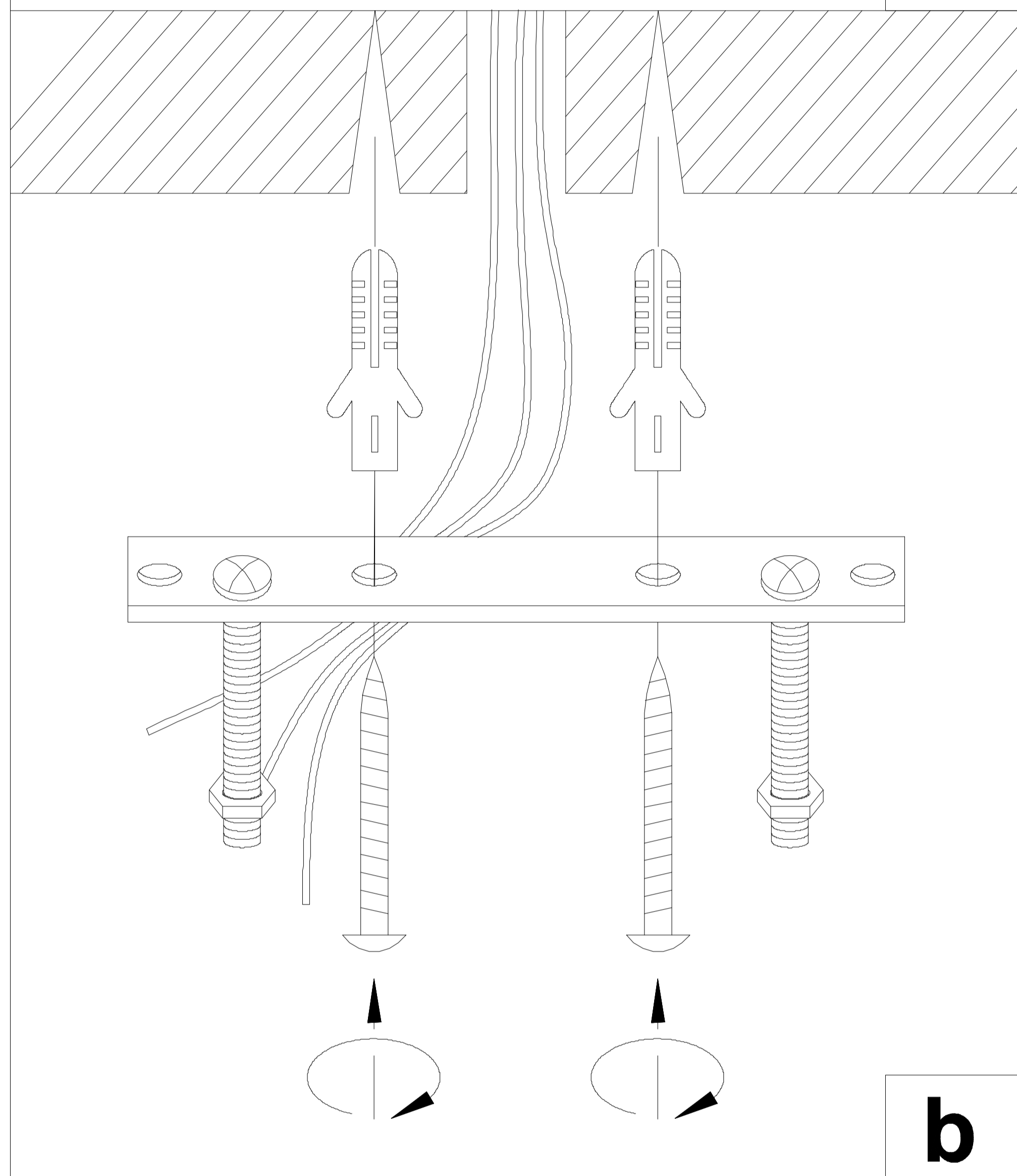
No.	Specification	pcs
A	E14(220V-240V 60W)	8
B	∅ 4*20CM	27
C	∅ 4*20CM	27

∅ 4*20CM

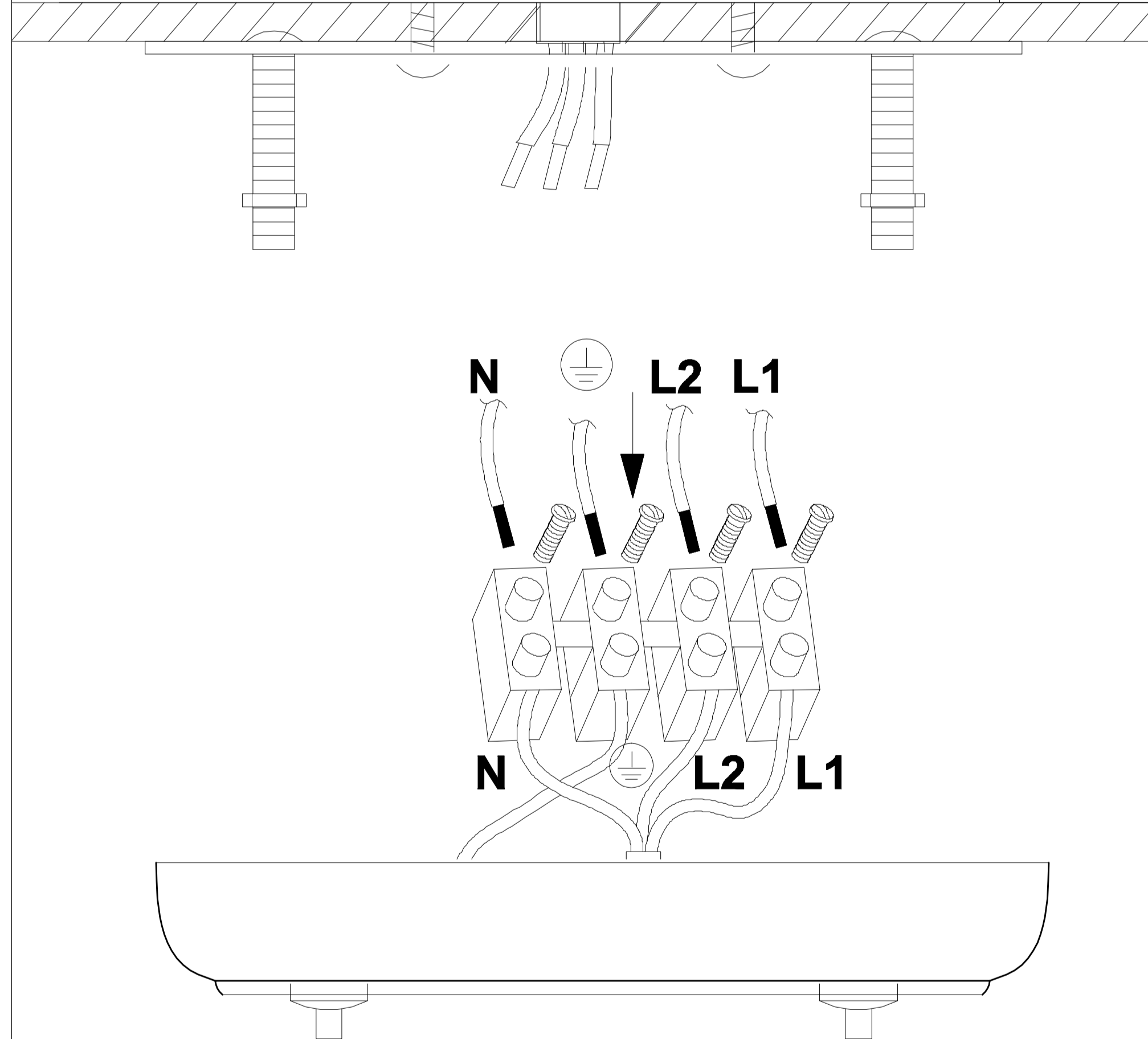
54 PCS



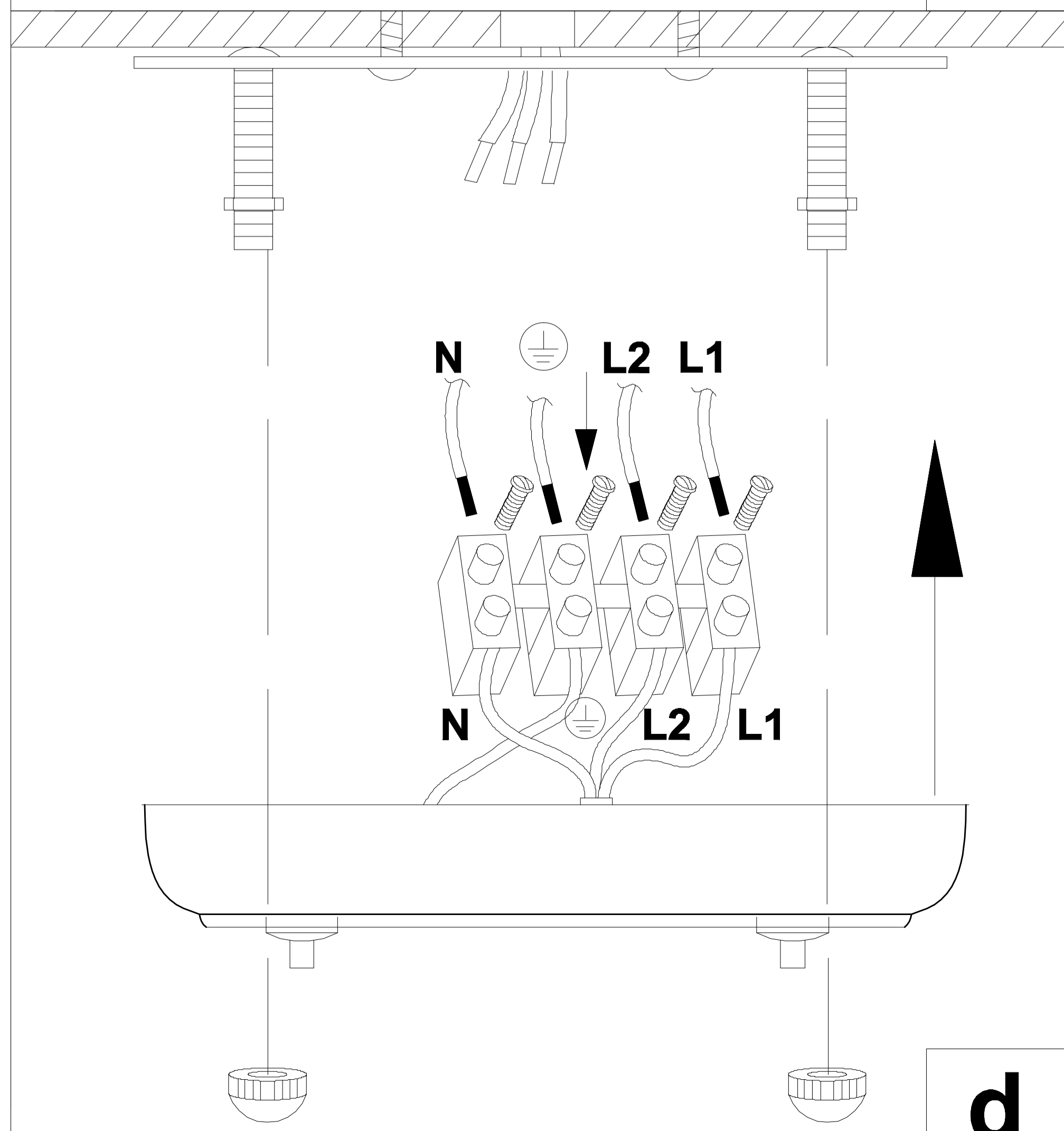
a



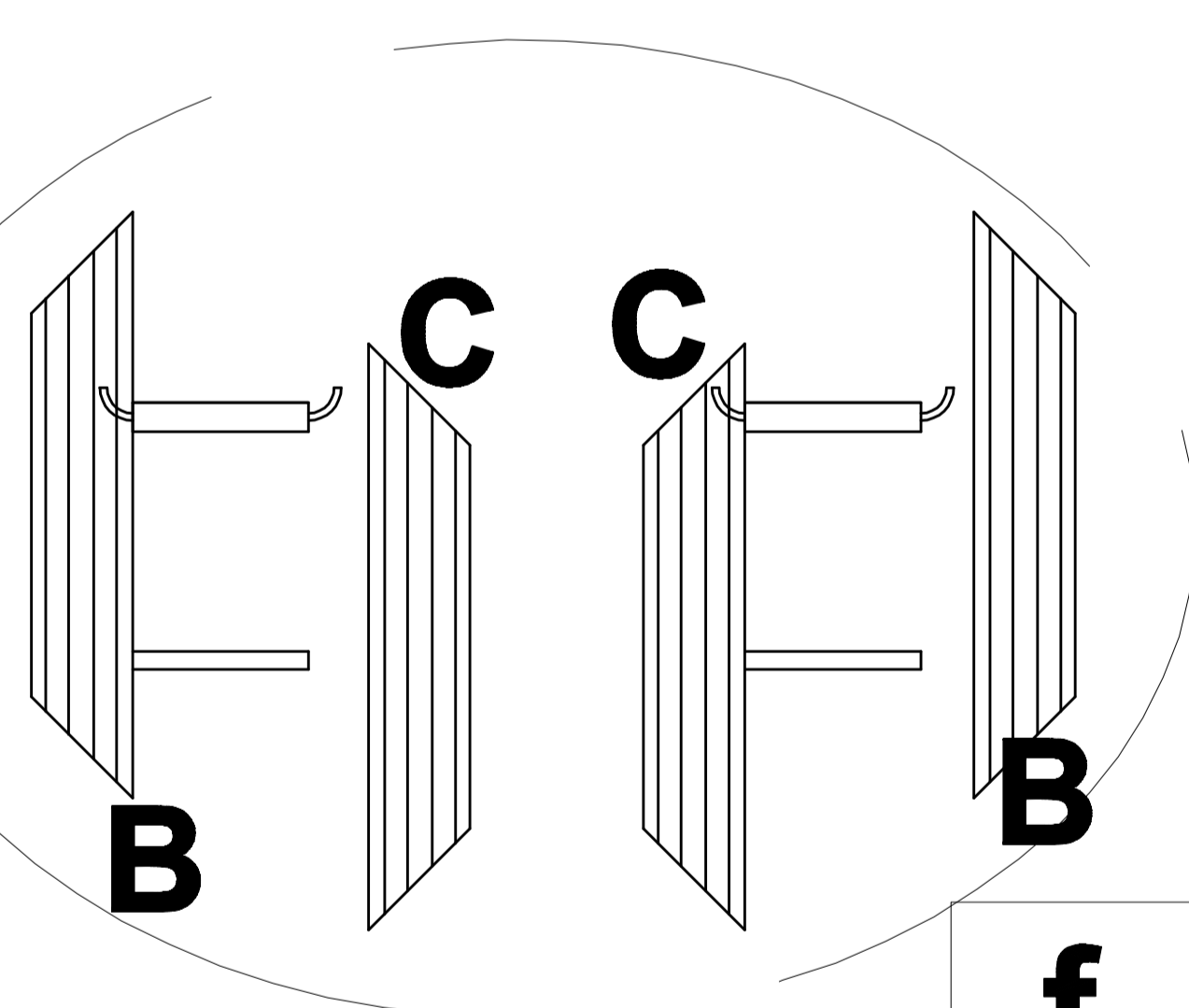
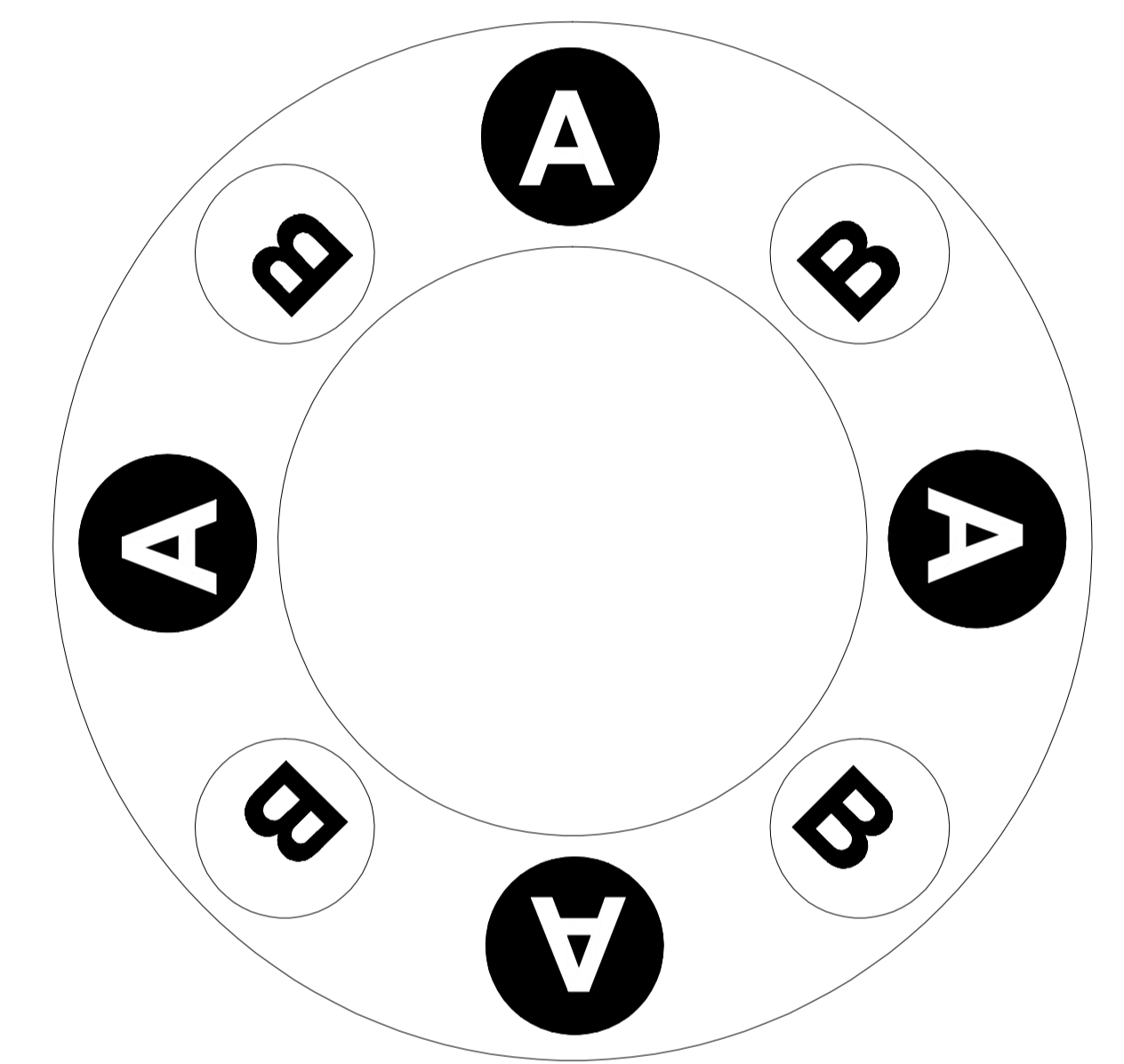
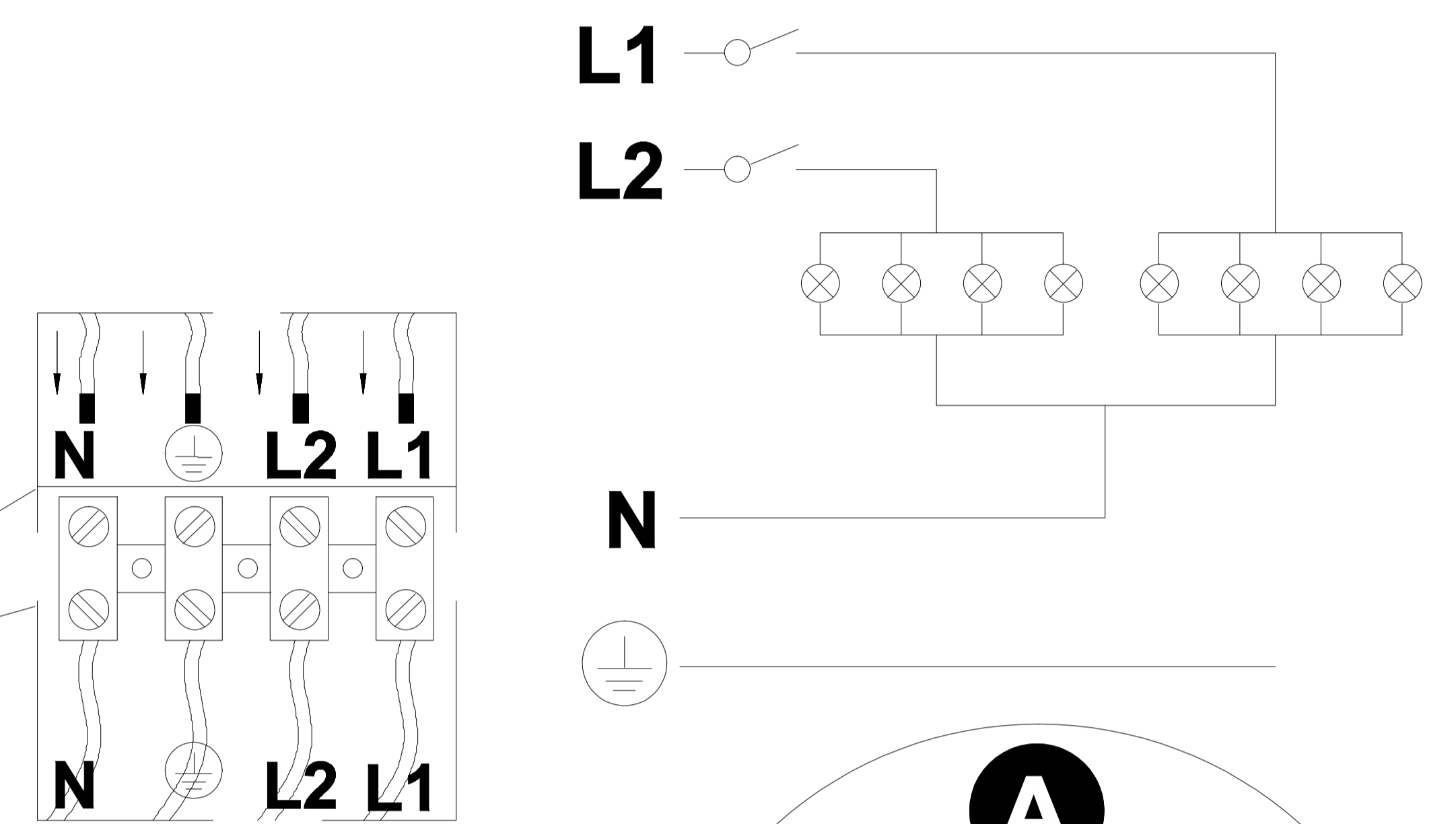
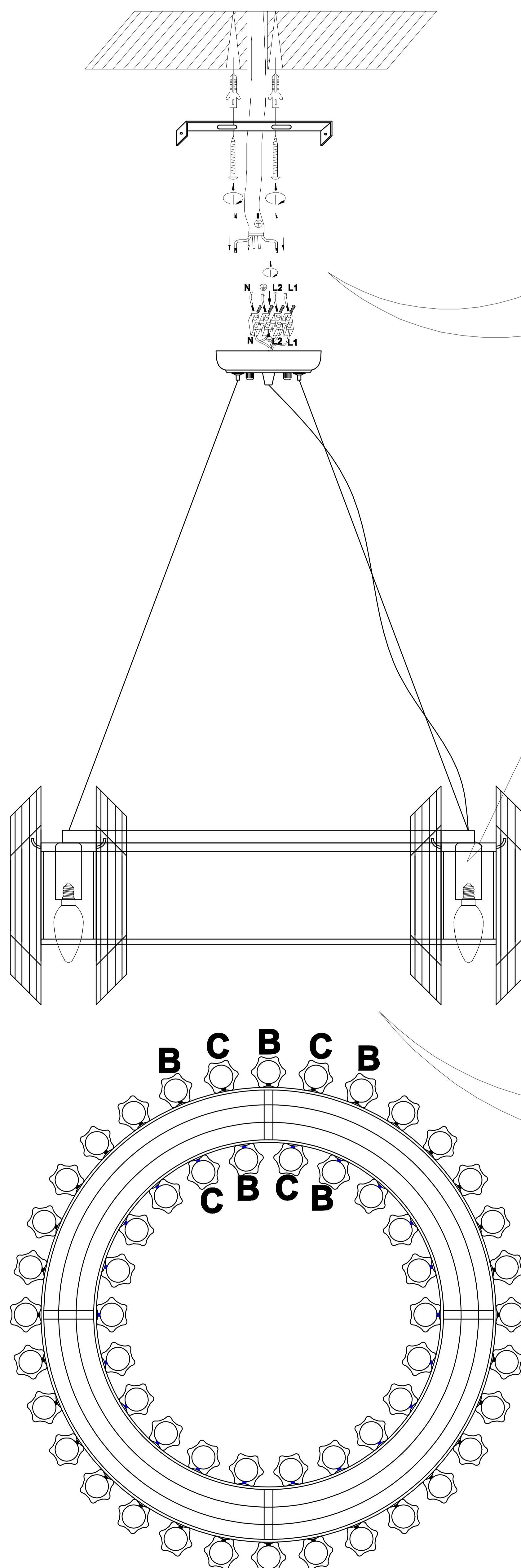
b



c



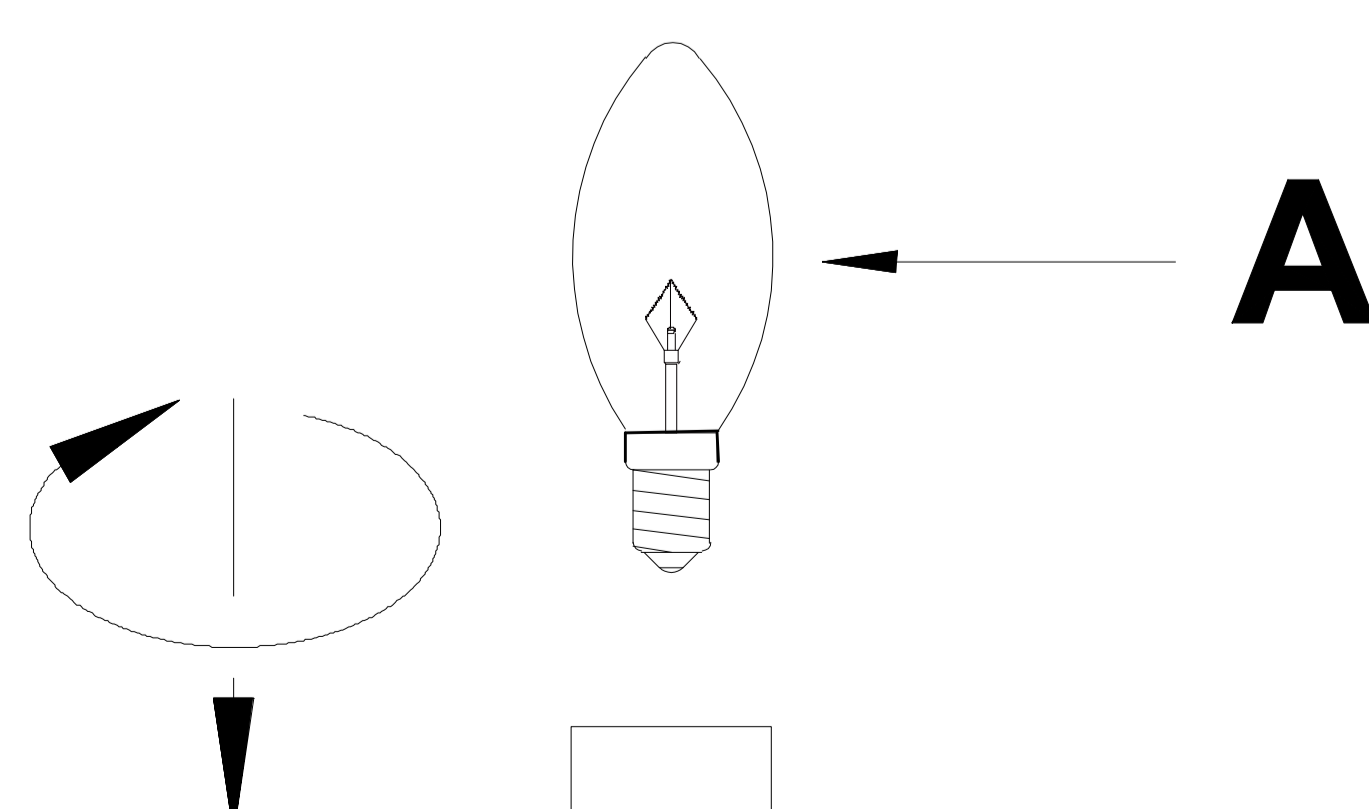
d



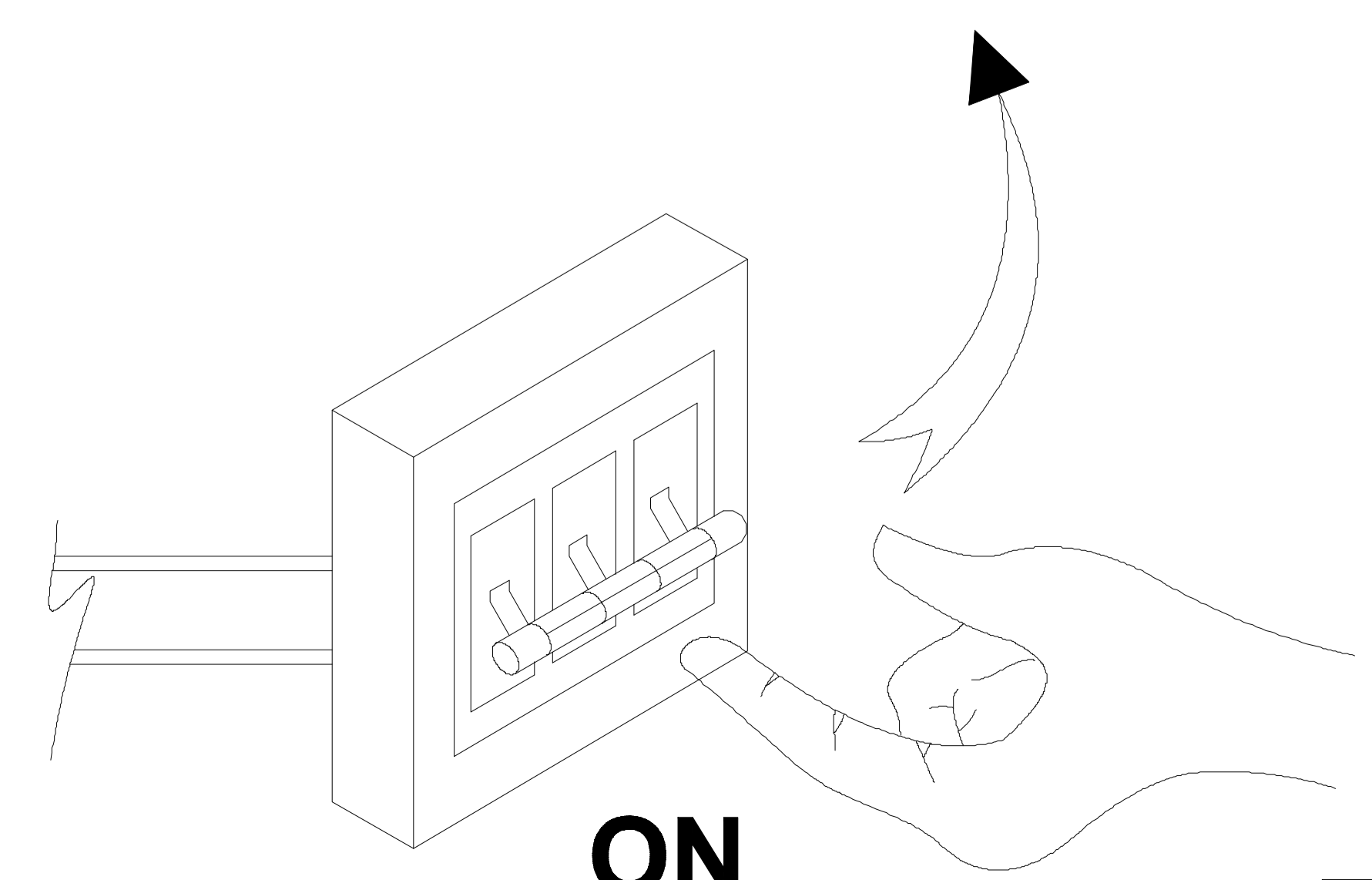
f

EN: Warning. Add the silicon washers under the screws as shown. Don't twist the screw with high force when installing the crystals. This may lead to the crystal drop damage or crack.

RU: Внимание. Используйте прилагаемые силиконовые прокладки под болтики как показано. Не затягивайте болтики при креплении хрустальных подвесок с излишней силой. Это может привести к разрушению хрустальной подвески.



e



g